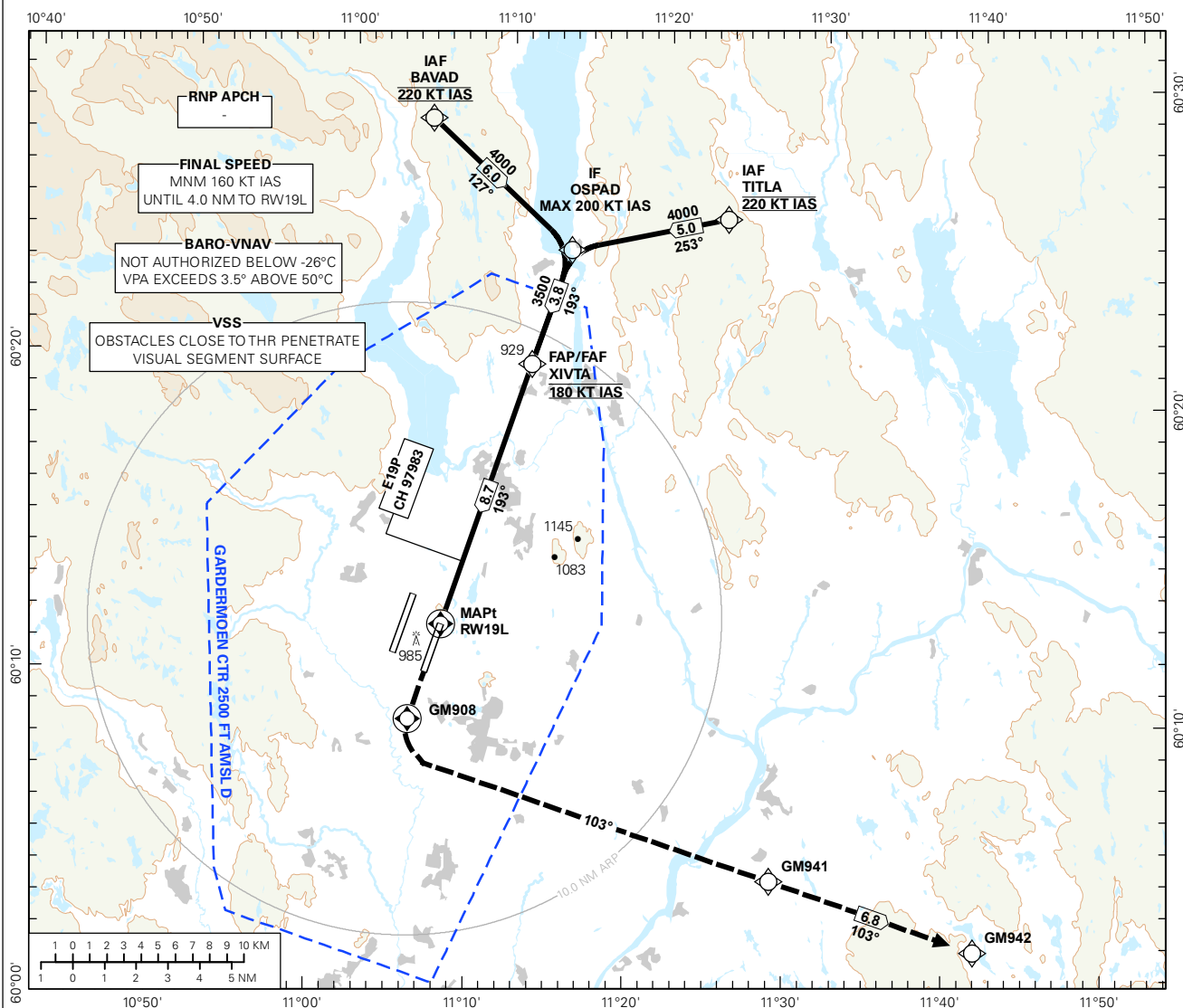


INSTRUMENT APPROACH CHART - ICAO PLAN VIEW SCALE: 1:400 000

OSLO

GARDERMOEN
RNAV(GNSS) RWY 19LTRANSITION ALTITUDE
7000

<div style="border: 1px solid black; border-radius: 50%; width: 60px; height: 60px; display: flex; align-items: center; justify-content: center; margin: 0 auto;"> <div style="border: 1px solid black; border-radius: 50%; width: 40px; height: 40px; display: flex; align-items: center; justify-content: center;"> 3₉ </div> </div> <div style="text-align: center; margin-top: 5px;">MSA 25 NM ARP</div>	ATIS: 126.125	AD ELEV: 681		
	APP: 118.475 120.450	THR ELEV: 681	DIST IN NM	
	DIR: 136.400 (119.975)	HGT RELATED TO THR RWY 19L	ELEV, ALT AND HGT IN FT	
	FIN: 128.900			
	GND: 120.100 (123.325)	CIRCLING HGT RELATED TO AD ELEV		
	VDF: 121.900	BEARINGS ARE MAGNETIC - VAR 2.8 ° E (2015)		



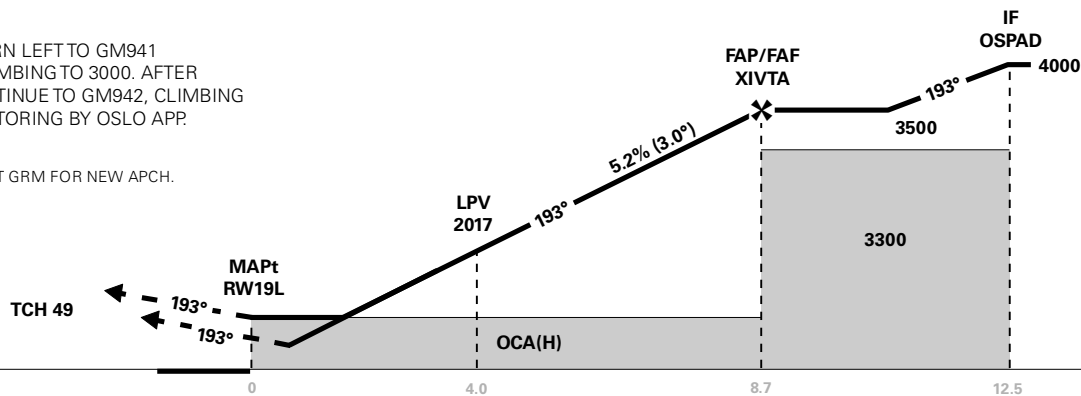
DIST TO RWY19L	9	8	7	6	5	4	3	2
ALT (HGT)	-	3280 (2599)	2970 (2289)	2650 (1969)	2330 (1649)	2010 (1329)	1690 (1009)	1370 (689)

MISSED APCH:

CLIMB TO GM908. TURN LEFT TO GM941
ON COURSE 103°, CLIMBING TO 3000. AFTER
PASSING GM941 CONTINUE TO GM942, CLIMBING
TO 5000. EXPECT VECTORING BY OSLO APP.

RCF:

AT GM942 TURN LEFT DCT GRM FOR NEW APCH.



CAT OF ACFT		A	B	C	D	FINAL APCH	DIST FAF - MAPt: 8.7					
OCA(H) STRAIGHT - IN	LPV	920 (239)	930 (249)	940 (259)	950 (269)		SPEED	KT	70	90	120	150
	LNAV/VNAV	1000 (319)	1010 (329)	1030 (349)	1150 (469)	FT/MIN		370	480	635	795	955
	LNAV	1230 (560)				TIME	MIN:SEC	07:28	05:48	04:21	03:29	02:54
CIRCLING		1280 (599)		1530 (849)	1630 (949)	ROD	FT/MIN	370	480	635	795	955

NOTE: CIRCLING E OF RWY ONLY.

CHANGES: SPEED RESTRICTIONS.

Avinor

17 SEP 2015

RECOMMENDED RNAV PROCEDURE CODING

ENGM RNAV(GNSS) RWY 19L										
Serial Number	Path Descriptor	Waypoint Identifier	Fly-over	Course °M(°T)	MAG VAR	DIST (NM)	Turn Dir	ALT (FT)	Speed (KT)	VPA/TCH
010	IF	TITLA	-	-	-	-	-	A5000+	K220	-
020	TF	OSPAD	-	253 (256.0)	-	5.0	-	A4000+	K200-	-
010	IF	BAVAD	-	-	-	-	-	A5000+	K220	-
020	TF	OSPAD	-	128 (130.4)	-	6.0	-	A4000+	K200-	-
030	TF	XIVTA	-	193 (196.2)	-	3.8	-	A3500+	K180	-
040	TF	RW19L	Y	193 (196.1)	-	8.7	-	-	-	-
050	TF	GM908	Y	193 (196.1)	-	3.2	-	-	-	-
060	CF	GM941	-	103 (106.0)	-	-	L	A3000	-	-
070	TF	GM942	-	104 (106.4)	-	6.8	-	A5000	-	-

Note: Recommended RNAV procedure coding is based on ARINC 424-15 and is provided solely to indicate which procedure design protection areas were used in the Instrument Flight Procedure Design process.

Note: Published OCA(H) values are obstacle clearance values. Decision heights (DH) below 250 FT shall not be used due to APV approach operation Type A limitations.

FAS DATA BLOCK

Operation type	0	LTP/FTP ellipsoidal height	246.0
SBAS Provider	1	FPAP latitude	601028.6565N
Airport Identifier	ENGM	FPAP longitude	0110625.6700E
Runway	RW19L	Threshold crossing height	15
Approach performance designator	0	TCH units	M
Route Indicator	-	Glide path angle	3.0
Reference path data selector	0	Course width at threshold	105
Reference path Identifier	E19P	Length offset	136
LTP/FTP latitude	601204.3535N	Horizontal alert limit (HAL)	40
LTP/FTP longitude	0110720.9510E	Vertical alert limit (VAL)	50
	PRECISION APPROACH PATH CRC REMAINDER		18855951

NON FAS DATA BLOCK FIELDS

LTP Ortometric Height	207.6
FPAP Ortometric Height	204.2